

Accessory Overview



Barrel and Cuboid Accessories

- 1 Drain Valve & Adapter
- 2 Hose Valves
- 3 Quick Connect Camlock Adapters
- 4 Outlet Strainer
- 5 Keys for Insulated Cover
- 6 Teflon Tape
- 7 Spare Gaskets - Outlet Strainer
- 8 Spare Screws

Dynamic Cold Therapy's Cold Plunge comes with an assortment of accessories. Not all of these accessories are required to use the Cold Plunge, but they provide convenience and ease of use.

The Premier Edition Chiller comes with everything users need to connect to a Cold Plunge.



Premier Edition Chiller Accessories

- 1 Filter Wrench
- 2 Strainer Attachment
- 3 Hoses with Insulated Sleeves
- 4 Teflon Tape
- 5 Strainer Sleeve
- 6 Filter Sleeve
- 7 Spare Gaskets - Hoses
- 8 Spare Adapters

Caps, Gaskets & Teflon

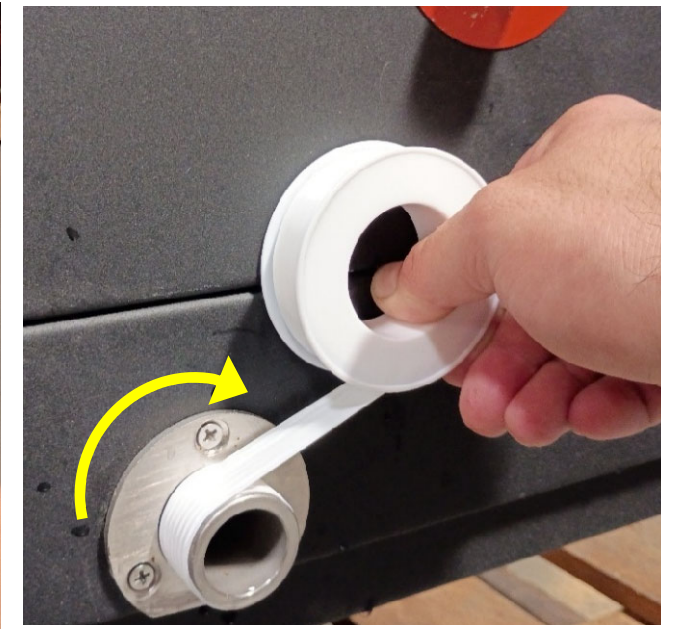


- Remove the Caps from the Cold Plunge Inlet, Outlet, and Drain Outlet

- Be sure to check for the Cap Gaskets. They may be lodged inside the pipes and should be removed



- Apply Teflon Tape to all Threads (Inlet, Outlet, and Drain Outlet). Wrap Teflon Clockwise 3-5 times around.

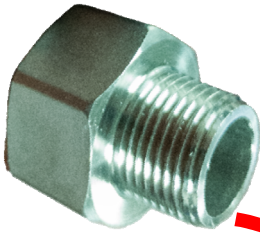
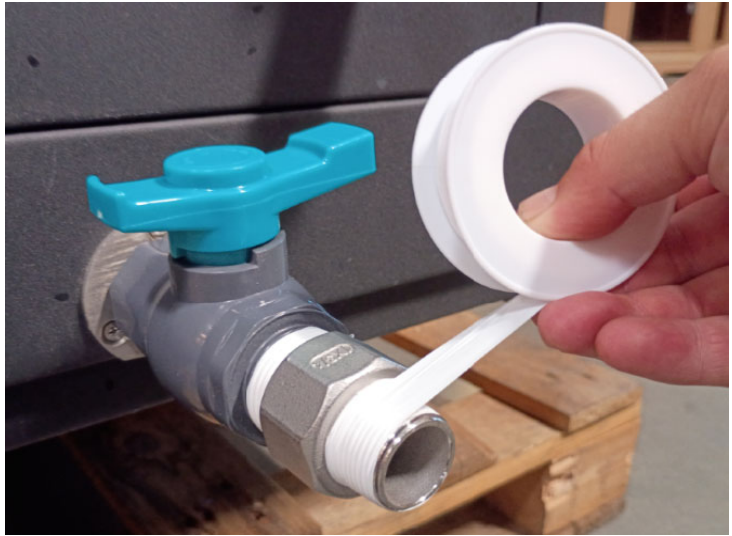


Teflon must be used on all threaded connections to prevent water leaking!!

Valves, Adapters and Teflon



• Thread Valves onto Drain Outlet and Inlet & Outlet Fittings, then wrap Valve Threads in Teflon



• Thread Drain Adapter onto Drain Valve, and Quick Connect Adapters onto Inlet/Outlet Valves



Be sure all Valves are turned to the OFF position



Chiller Fittings & Filter Cup

- Remove Caps from Chiller Inlet & Outlet. Be sure that Gaskets are not stuck to the threaded fittings. Wrap Threads in Teflon.



- Remove Filter Cup, place Filter, and refasten Filter Cup using Filter Wrench



Strainer, Hoses & Camlocks



- Fasten Strainer to Chiller Inlet. Wrap Strainer Threads in Teflon.

Ready to fasten Hoses



- Check that Hose Gaskets are in place

- Fasten Hoses to Chiller Outlet and Strainer



- Wrap Camlock Threads in Teflon

- Thread Camlock onto loose Hose end

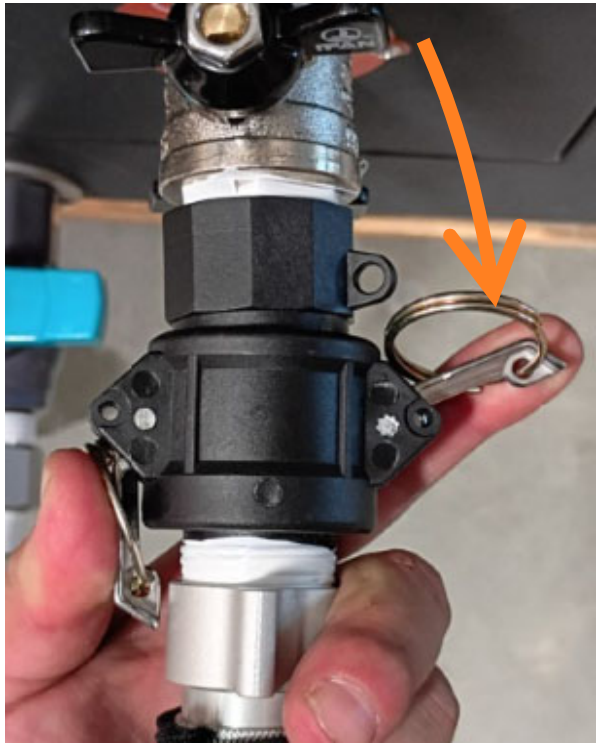


Quick Connect Camlocks

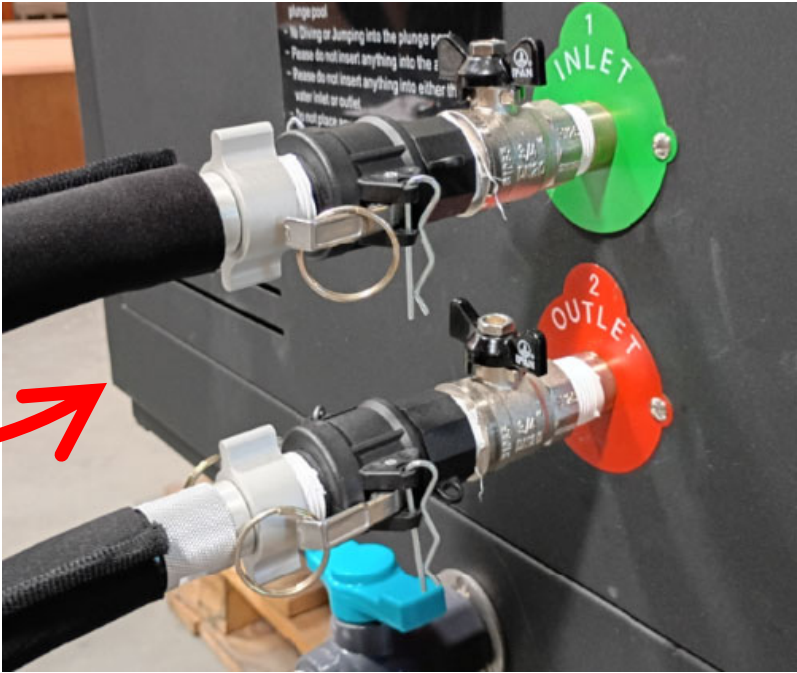
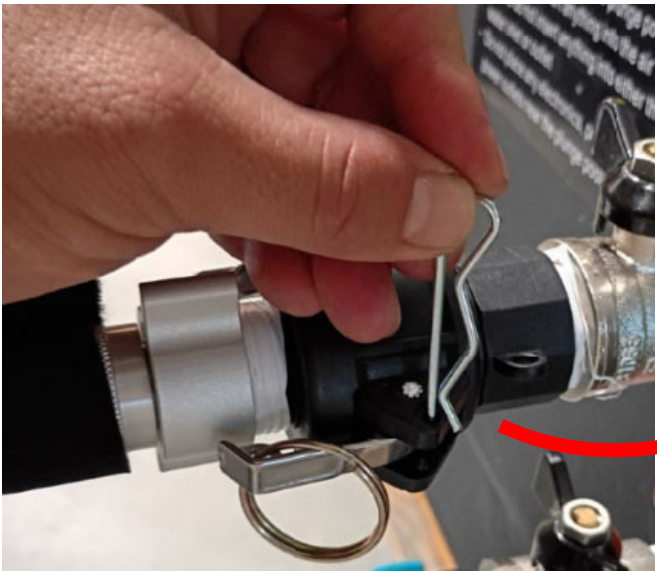
- Camlocks fasten to Adapters



- Metal clasps are pushed down to lock Quick Connects in place



Clasps are locked into place by the Cotter Pins included with Camlocks:



Hose Configuration

Doublecheck!! The **Tub Outlet needs to be connected to the **Chiller Inlet**,
and the **Tub Inlet** needs to be connected to the **Chiller Outlet**:**



Fill with Water

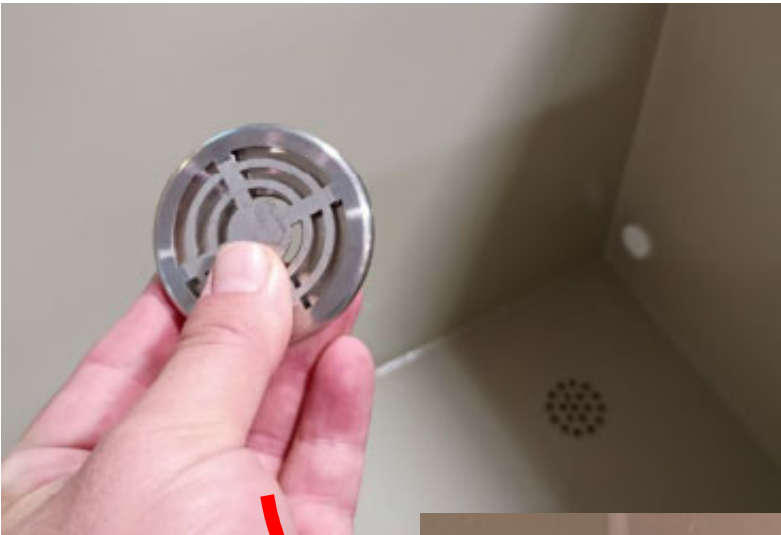
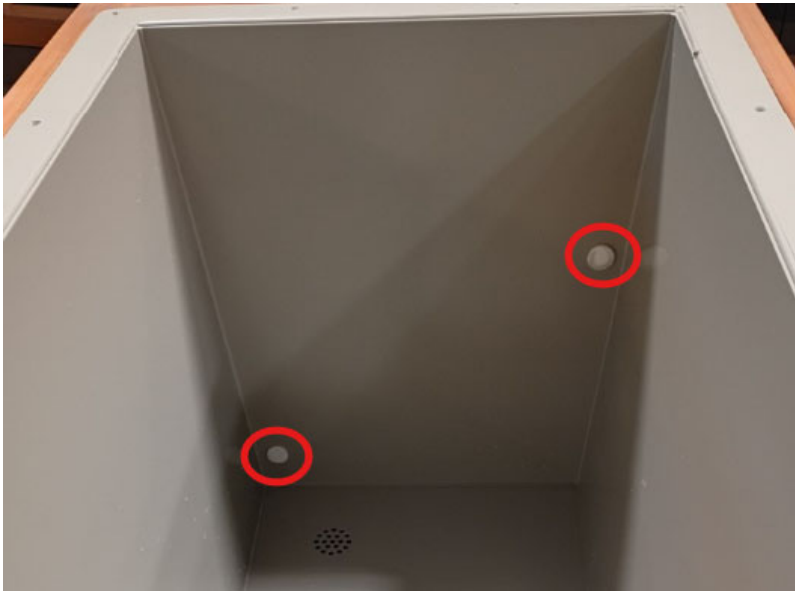
Valves CLOSED when turned perpendicular. Ready to Fill with water ✓



*** Observe for leaks during filling ***

- Outlet Strainer is placed inside Cold Plunge Outlet

- Inlet & Outlet Plugs can be removed



Fill with Water



- Fill the Cold Plunge with Water, to at least 1-2 inches above Inlet

** Observe for leaks during filling **



- Open Inlet and Outlet Valves



Purge Air from Chiller

- Loosen Strainer Cup until it begins to fill with water



- Once filled with Water, re-tighten Strainer Cup



- Loosen Filter Cup until it begins to fill with water

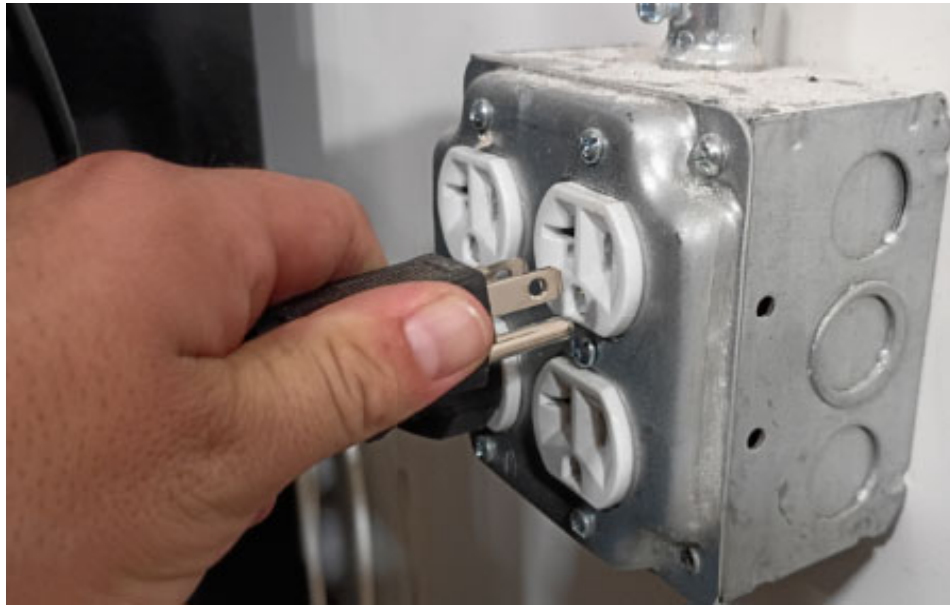


- Once filled with Water, re-tighten Filter Cup



Turning on the Chiller

- Plug the Chiller into a 120v wall outlet



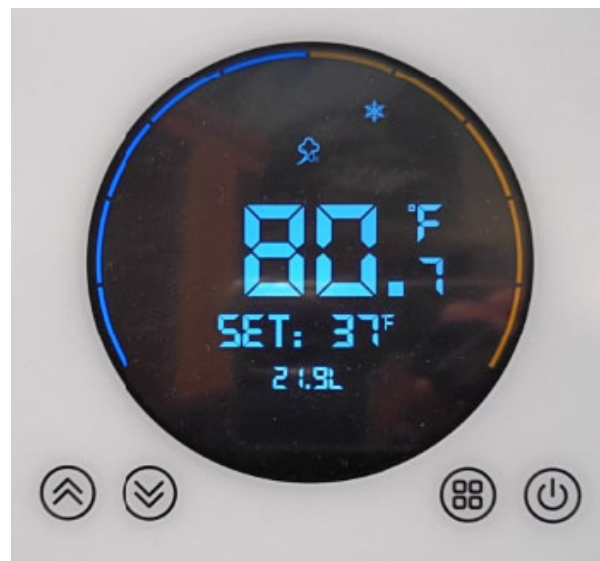
- With the Chiller set to ON, press orange Test Button to test RCD. Power switch should flip to OFF. Flip Power Switch back to ON.



- Press POWER Button on Chiller Control Panel



- Chiller will begin flowing water



Chiller Settings

- Tap SETTINGS key to adjust Temperature



- Then use UP & DOWN keys to change setting



- Press & Hold UP & DOWN keys for 3~ seconds to Lock or Unlock Control Panel



- Press & Hold SETTINGS key to activate WiFi Pairing



** WiFi Network must be 2.4GHz frequency. Please refer to Chiller Owner's Manual for complete instructions on WiFi connectivity*

Condensation Sleeves

- The Chiller comes with 2 insulated Hoses, as well as Condensation Sleeves for the Strainer Attachment and Filter Cup

